



GAT MONTHLY MEMBERSHIP PROGRESS REPORT

Results as of: 3/31/2023

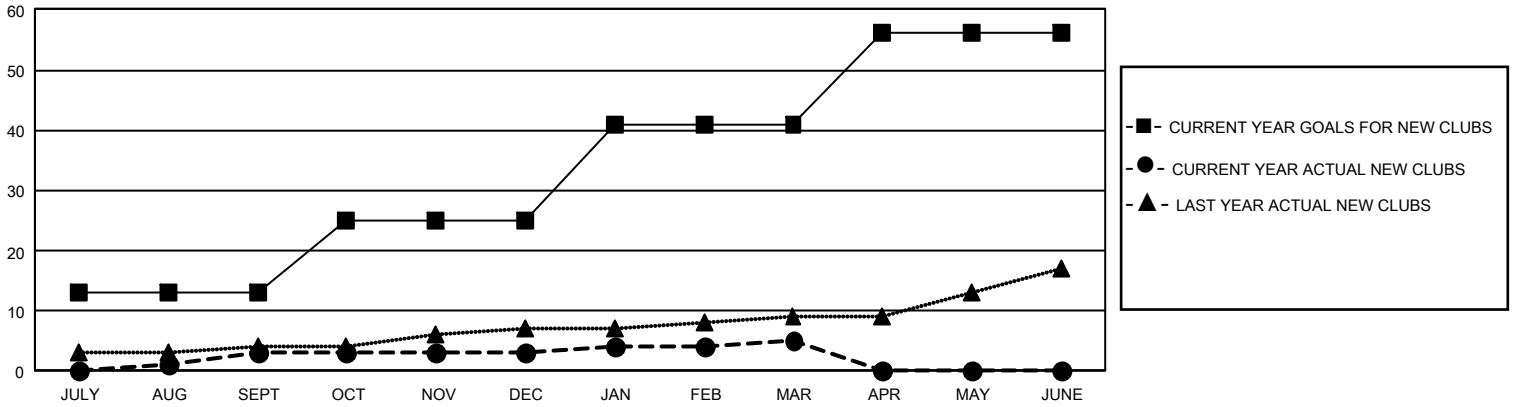
GMT Constitutional Area 1, Group B

REPORT DOES NOT INCLUDE CLUBS IN UNDISTRICTED AREAS.

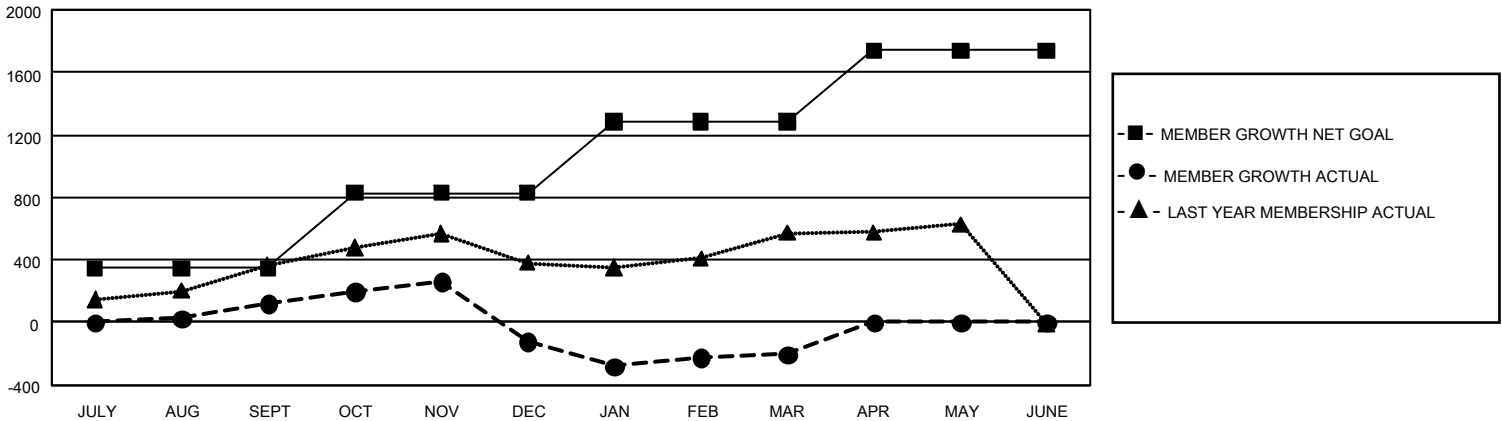
Clubs			
RESULTS FOR 2022-2023			
QUARTER	NEW CLUB GOAL	NEW CLUBS	DROPPED CLUBS
JULY/AUG/SEPT	39	3	5
OCT/NOV/DEC	36	0	17
JAN/FEB/MAR	48	2	4
APR/MAY/JUNE	45	0	0

Members			
RESULTS FOR 2022-2023			
QUARTER	MEMBER GROWTH NET GOAL	MEMBER GROWTH ACTUAL	DROPPED MEMBERS ACTUAL (including transfers)
JULY/AUG/SEPT	345	1,023	803
OCT/NOV/DEC	482	779	945
JAN/FEB/MAR	460	928	849
APR/MAY/JUNE	452	0	0

GOALS AND ACTUAL NEW CLUBS CUMULATIVE



GOALS AND ACTUAL MEMBERS CUMULATIVE



DROPPED CLUBS: 26	
DROPPED MEMBERS	
DECEASED	262
CLUB CANCELLED	180
OTHER	2,160
TOTAL	2,602

540 CLUBS OF 907 ADDED 1 OR MORE NEW MEMBERS

[CLICK HERE FOR CUMULATIVE MEMBERSHIP DATA](#)

GENDER DISTRIBUTION	
MALE	13,688 (57.45%)
FEMALE	10,116 (42.46%)
NON BINARY	2 (0.01%)
PREFER NOT TO ANSWER	18 (0.08%)
TOTAL FAMILY UNIT MEMBERS	4,713
FAMILY MEMBERS PAYING HALF DUES	2,487